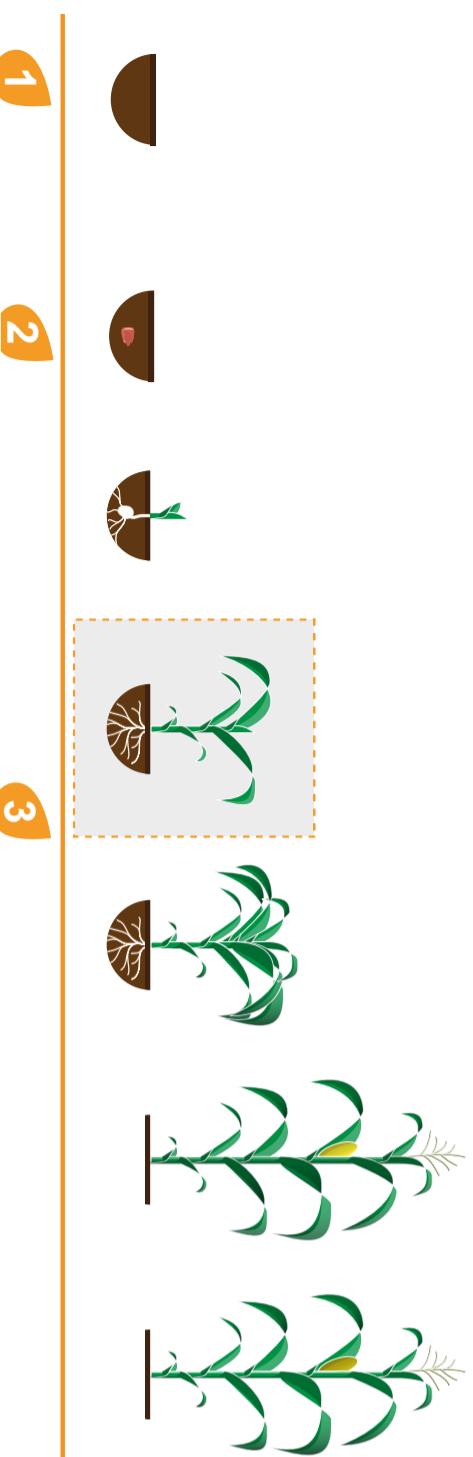


GROWING RECOMMENDATIONS



- Split your fertilizer applications to optimize their use by the plants.
- Your granular fertilizers need to be buried to ensure their effectiveness.
- MASTROP.103 is suitable for the use of Nicosulfuron and Rimsulfuron herbicides (in compliance with the recommended doses and application conditions). Plan the use of a herbicide in pre-emergence and post-emergence if necessary.



| | 1 | 2 | 3 |
|---------------|--|--|--|
| Fertilization | manure input (poultry droppings or beef manure) or compost - if possible | 1st fertilizer input solid | 2nd intake of foliar fertilizer (3-4 leaves) 3rd addition of solid fertilizer (5-8 leaves) |
| Phyto control | Herbicide pre-emergence | Insecticide on emergence (preventive treatment against caterpillars and worms) | -Post-emergence herbicide, Treatment Insecticide (preventive treatment against caterpillars) |

OPTIMUM FERTI PROGRAM (in UNITS)

For a yield objective of 10T/ha with 62 500 plt/ha density

| | |
|----------------------|----------------------------------|
| N > 220 units | M_{go} < 4 units |
| P > 120 units | Z_n > 2 units |
| K > 60 units | S_{o3} > 20 units |

- At harvest, dry the ears in cribs or on a tarpaulin. Keep them away from rain, insects, rodents and moisture.

Tampon du Distributeur

MAS Seeds CI
Riviera, Bonoumni, à 300 m d'Abidjan Mall,
Boulevard Dje'dje Mady, Rue R_F, lot 60, Lot 812 Bonoumni, Cocody
ABIDJAN, Côte d'Ivoire



SCAN ME

mas seeds
UNITED TO GROW

<https://fr-africa.masseeds.com/>

KABAKO KABA !!

mas seeds
UNITED TO GROW

THE CORN THAT ADAPTS
TO ALL YOUR FIELDS

MASTROP.103





SILAGE & GRAIN MAIZE

MASTROP.103

THE CORN THAT ADAPTS TO ALL YOUR FIELDS

A VIGOROUS PLANT

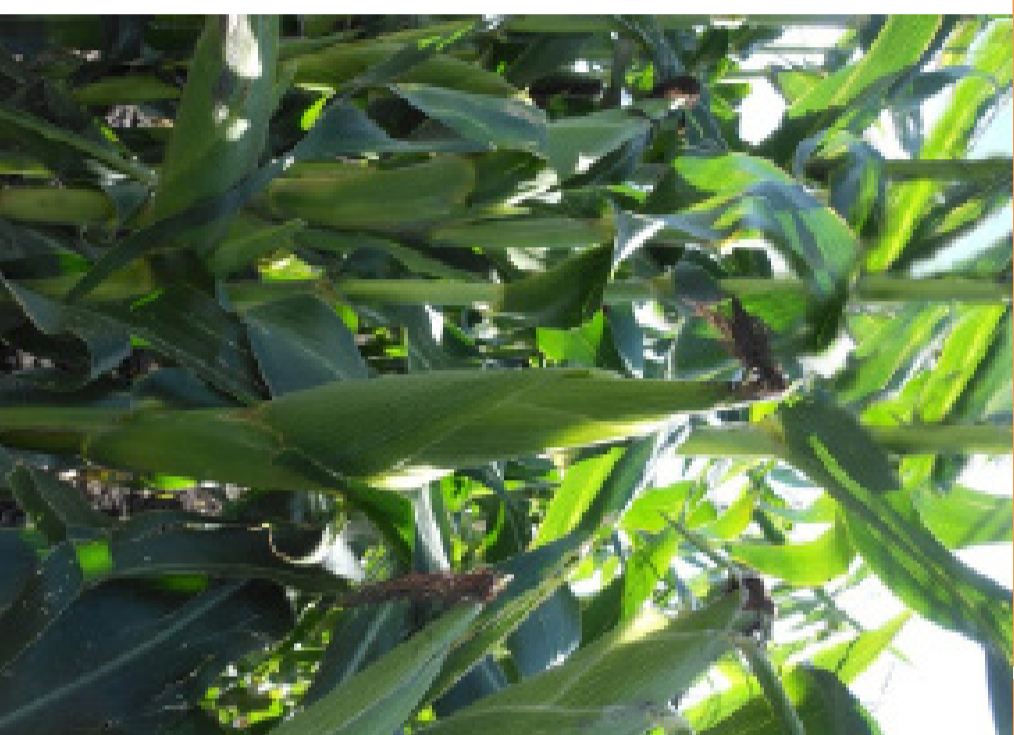
MASTROP.103 will express its full potential even in stressful conditions.

STABLE AND REGULAR

With MASTROP.103, high yields for the improvement of your performance.

A VERY BEAUTIFUL GRAIN

Elongated ear, smooth and orange grain, good nutritional value for food and industrial use (poultry, brewery). MASTROP.103 will satisfy all the requirements of the value addition sectors.

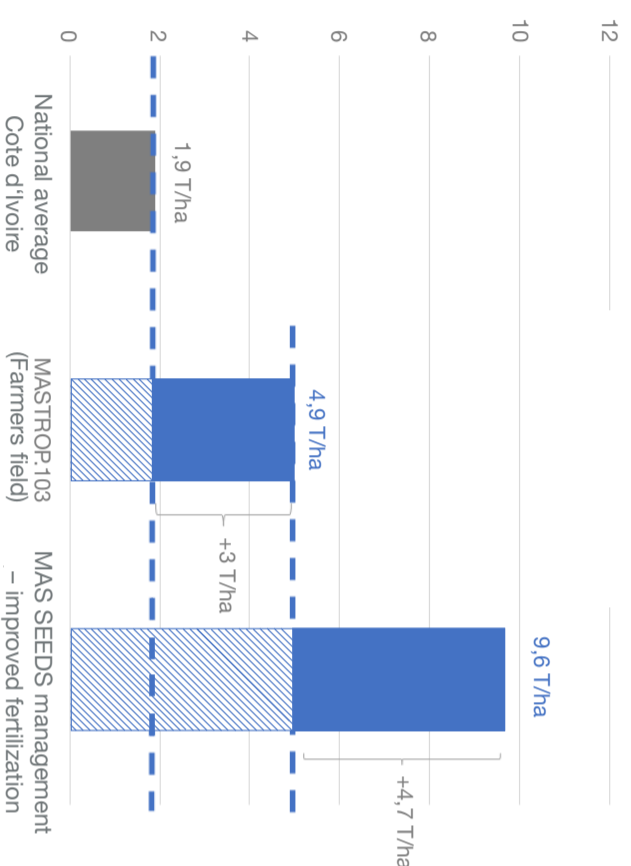


CHARACTERISTICS

| | |
|--|---------------|
| Days from sowing to physiological maturity : | 90-95 days |
| Number of days for fresh harvest : | 70-75 |
| Plant height : | 2,35 m |
| Ear insertion : | 1,10 m |
| Grain type : | Orange - dent |
| Nb days to flowering : | 50-55 |
| Fusarium : | 7 |
| Helminthosporium : | 7 |
| Lodging : | 7 |
| Number of rows : | 14-16 |
| Number of grains per row: | 38-40 |
| Weight of 1000 grains : | 330-360 g |

DISEASE RATING SCALE: 1 SENSITIVE TO 9 VERY TOLERANT

Yield Potential



R&D network results 2021

CULTIVATION AREA

| Recommended planting period | Zones de culture |
|-----------------------------|----------------------------|
| mid-June to mid-July | Savannah zone |
| mid-March to mid-April | Forest Zone - Major season |
| early September | Forest Zone - Minor season |

DENSITY

RECOMMENDED SOWING DENSITY:

- Optimal conditions : 80 000 plants/ha
- Limited conditions : 62 500 plants/ha

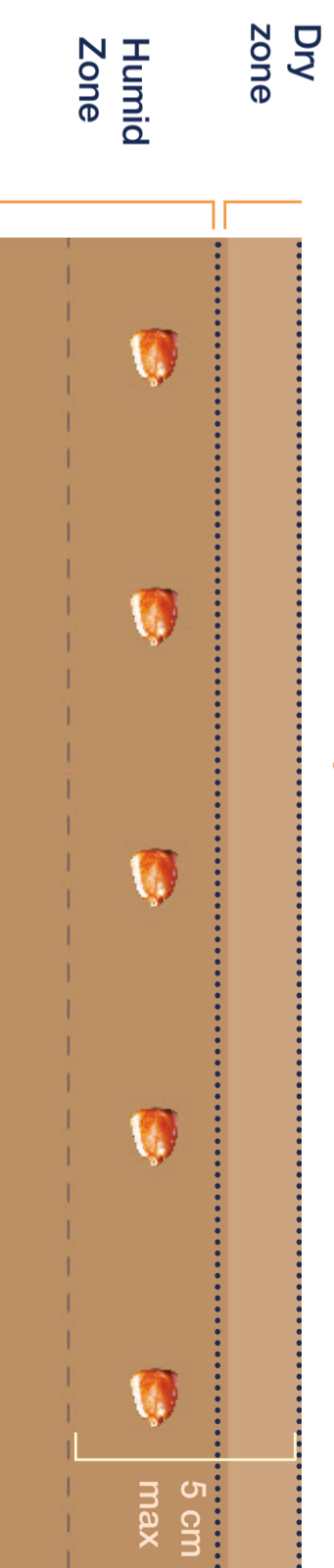
BEFORE SOWING

- Our seeds are alive, please store them in a cool, dry and well-ventilated place, away from insects and rodents or in a cold room at temperatures between 12 and 15 °C.
- It is recommended to carry out ploughing (20cm deep) and level the soil before sowing to have a homogeneous seedbed.
- Favor sowing when the rainy period is well established to allow the good start of the plant (when the rains become regular). Avoid sowing too late.
- Your plants will grow optimally in soil with a pH between 6 and 7.
- We advise to use 2 bags of seeds of 10Kg to sow 1 hectare.

AT SOWING

- Thanks to the high quality of our MAS SEEDS seeds, protected by high-performance phytosanitary technology, sowing will be carried out with only one seed per hole.
- Plant the seed in the humid part of the soil, at a maximum depth of 5 cm, ideally 3-4 cm depending on the state of the soil (see diagram).

Plant the seed in the humid part of the soil :



- During your sowing work, whether mechanical or manual, frequently check the regularity of sowing (distance between seeds, depth...).